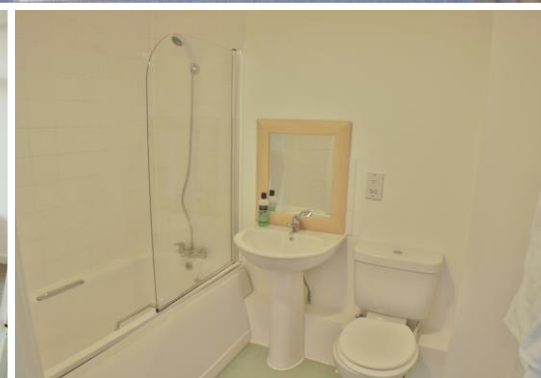




# PM ESTATES

Property Sales & Lettings



## Navigation House

Bishops Stortford, Hertfordshire, CM23 3AS

£875.00<sub>pcm</sub>



# Navigation House

Bishops Stortford, Hertfordshire, CM23 3AS

## Overview

- Rarely available top floor apartment
- One bedroom
- One bathroom
- Stunning river and town centre views
- Open plan living area
- Modern fitted kitchen
- Well-proportioned throughout
- Town centre location
- Offered furnished
- Walking distance to mainline rail station
- Energy rating B
- Council Tax band B



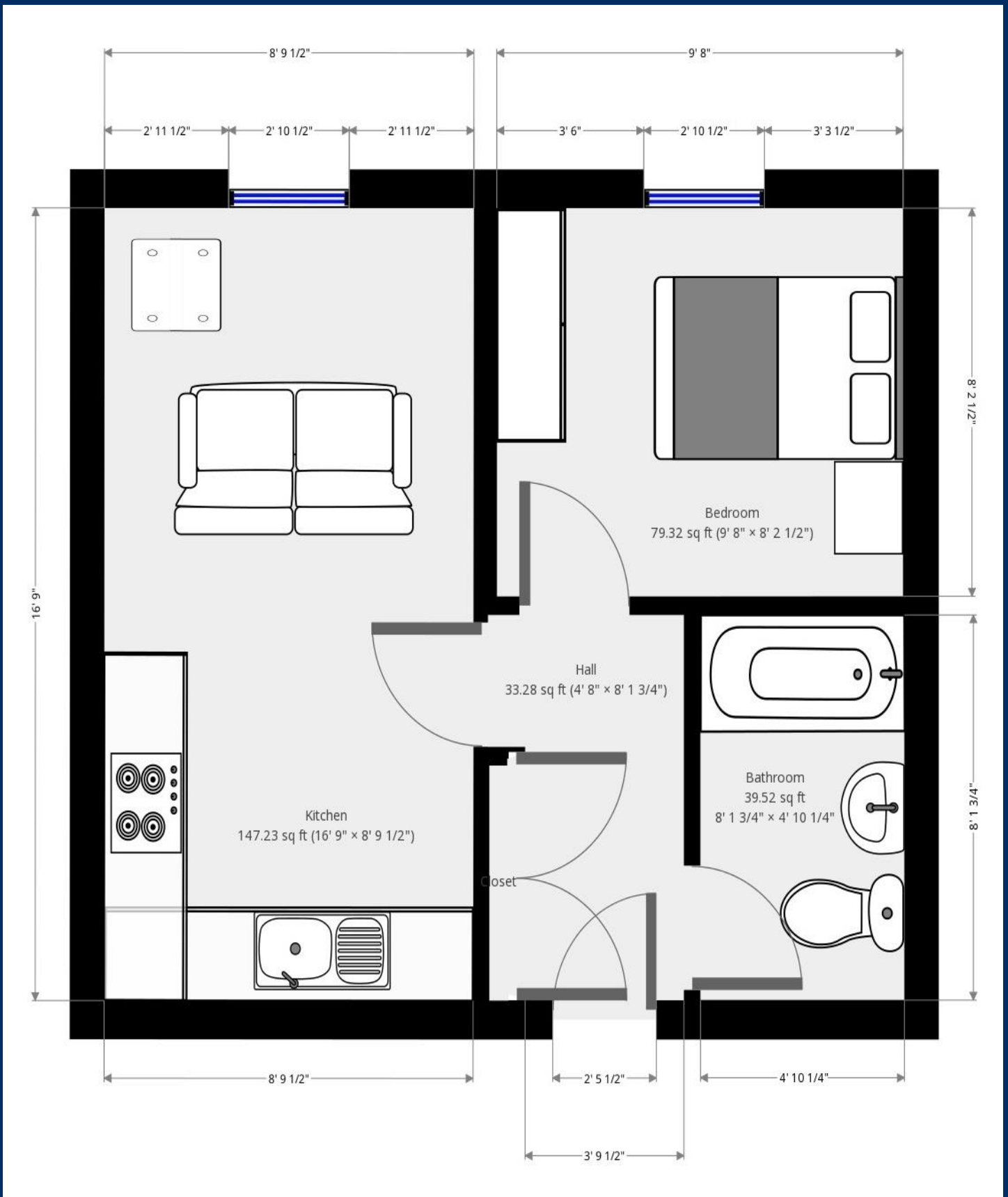
## Description

This larger than average and rarely available top floor apartment is located in a popular social hub within the town centre of Bishops Stortford. Clients who seek urban living will benefit from the close proximity of various bars, shops and restaurants with the mainline rail station just a five-minute walk offering services to London Liverpool Street, Cambridge and Stansted Airport.

This well-proportioned one-bedroom apartment comprises a large and open plan living which contains a modern fitted kitchen and a feature picture style window which offers direct river and town centre views. The property is complete with a double bedroom and family size bathroom.



Energy Efficiency Rating		Current	Potential	Environmental Impact (CO <sub>2</sub> ) Rating		Current	Potential
Very energy efficient - lower running costs				Very environmentally friendly - lower CO <sub>2</sub> emissions			
(92-100) <b>A</b>				(92-100) <b>A</b>			
(81-91) <b>B</b>		87	87	(81-91) <b>B</b>	88	88	
(69-80) <b>C</b>				(69-80) <b>C</b>			
(55-68) <b>D</b>				(55-68) <b>D</b>			
(39-54) <b>E</b>				(39-54) <b>E</b>			
(21-38) <b>F</b>				(21-38) <b>F</b>			
(1-20) <b>G</b>				(1-20) <b>G</b>			
Not energy efficient - higher running costs				Not environmentally friendly - higher CO <sub>2</sub> emissions			
England&Wales	EU Directive 2002/91/EC			England&Wales	EU Directive 2002/91/EC		



7 Riverside Walk, South Street, Bishop's Stortford, Herts CM23 3AG

Tel: 01279 654646

Email: [info@pm-estates.co.uk](mailto:info@pm-estates.co.uk)

[www.pm-estates.co.uk](http://www.pm-estates.co.uk)

PM Estates wish to advise prospective purchasers that we have not checked the services or appliances. The sales particulars have been prepared as a guide only; any floor-plan or map is for illustrative purposes only. PM Estates, for themselves and for the vendors or lessors of this property whose agents they are give notice that: the particulars have been produced in good faith; do not constitute any part of a contract; no person in the employment of PM Estates has any authority to make or give any representation of warranty in relation to this property.

P820

[www.pm-estates.co.uk](http://www.pm-estates.co.uk)