



PM ESTATES

Property Sales & Lettings



Tanners Wharf

Bishops Stortford, Hertfordshire, CM23 3FE

£2,100_{PCM}

Tanners Wharf

Bishops Stortford, Hertfordshire, CM23 3FE

Overview

- Modern Duplex Apartment
- Three Double Sized Bedrooms
- Family Sized Bathroom and Ensuite
- Open-Plan Living Area
- Fully Fitted Kitchen with Appliances
- Two Private Terraces
- Offered Part-Furnished
- Town Centre and River Views
- Popular Development
- Allocated Secure Parking
- Energy Rating B
- Council Tax Band D



Description

Situated in the sought-after Tanners Wharf development, this vast and modern duplex apartment is enhanced by its striking features throughout and is conveniently placed, close to all local amenities.

This stunning apartment comprises a downstairs family sized bathroom, two double bedrooms and an exceptionally large living area, containing a fully fitted gloss styled kitchen with integrated appliances along with access to a private balcony offering picturesque town and river views.

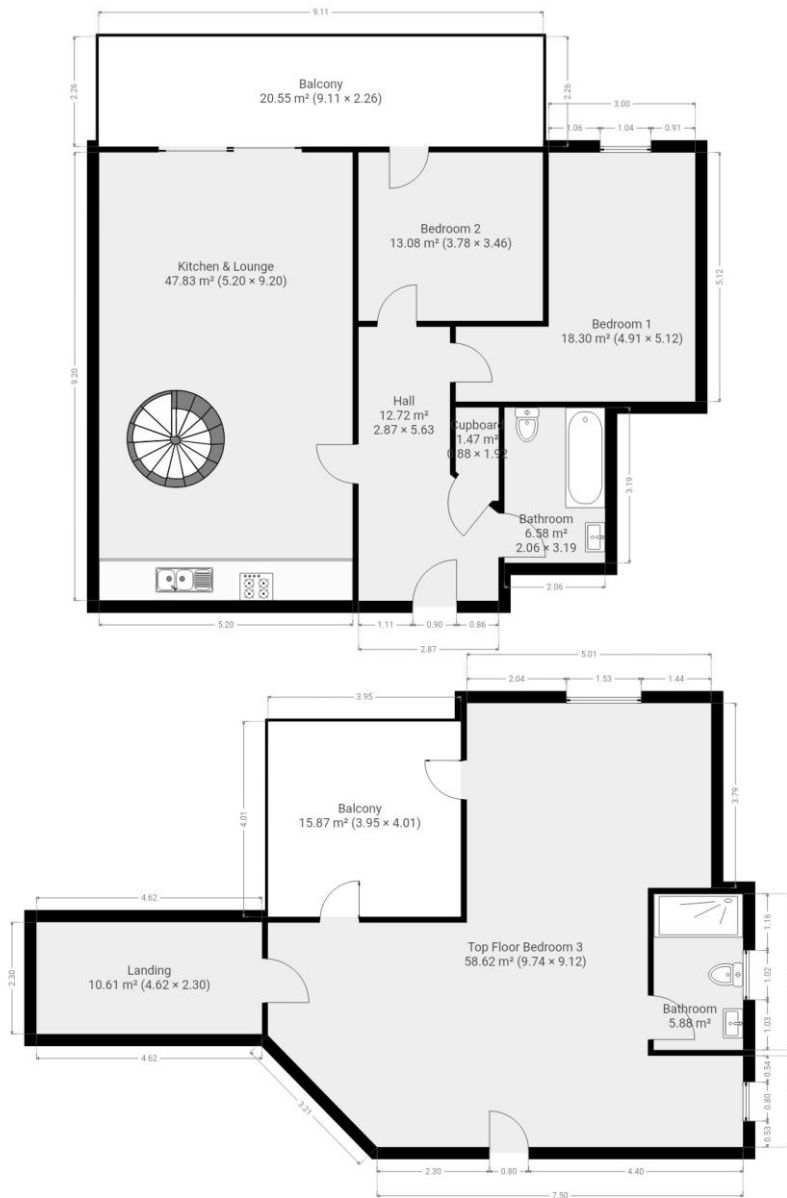
This bright and airy apartment is complete with one securely gated parking bay. This property is available to the market part-furnished, with double beds in all bedrooms.

Tanners Wharf is renowned for its high-quality finish and close proximity to Bishops Stortford Town Centre. The development is a 6-minute walk to the mainline rail station which offers direct services to London Liverpool Street, Stansted Airport and Cambridge.



Score	Energy rating	Current	Potential
92+	A		
81-91	B	81 B	81 B
69-80	C		
55-68	D		
39-54	E		
21-38	F		
1-20	G		

Floor Plan



7 Riverside Walk, South Street, Bishop's Stortford, Herts CM23 3AG

Tel: 01279 654646

Email: info@pm-estates.co.uk

www.pm-estates.co.uk

PM Estates wish to advise prospective purchasers that we have not checked the services or appliances. The sales particulars have been prepared as a guide only; any floor-plan or map is for illustrative purposes only. PM Estates, for themselves and for the vendors or lessors of this property whose agents they are give notice that: the particulars have been produced in good faith; do not constitute any part of a contract; no person in the employment of PM Estates has any authority to make or give any representation of warranty in relation to this property.

P820

www.pm-estates.co.uk