



# PM ESTATES

Property Sales & Lettings



## Cavell Drive

Bishops Stortford, Hertfordshire, CM23 5PW

£1,025.00<sub>pcm</sub>

[www.pm-estates.co.uk](http://www.pm-estates.co.uk)

# Cavell Drive

Bishops Stortford, Hertfordshire, CM23 5PW

## Overview

- Popular residential location
- Offered furnished
- Two double bedrooms
- Two bathrooms
- Large and open plan dual aspect living area
- Fully fitted kitchen
- Allocated and visitors parking
- 15-minute walk to the mainline rail station
- Good bus connections to Stansted Airport
- Contemporary bright and airy ambience
- Energy rating C
- Council Tax band C

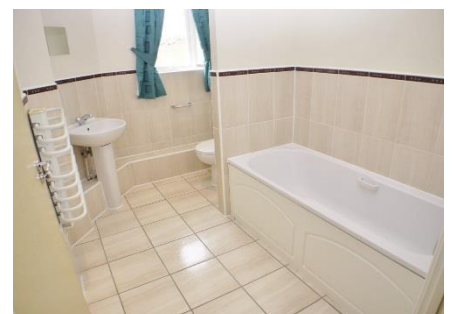


## Description

Situated in a popular residential area of Bishops Stortford and within walking distance to four renowned schools one of which being Hockerill Anglo-European College, this exceptionally large two double bedroom apartment is offered with the luxury of allocated parking.

The main feature within this contemporary apartment is the large and open plan living space which has the benefit of dual aspect windows. This open plan design features a clear living space, dining space and a fully fitted kitchen. The property is complete with both an en-suite shower room and family size bathroom with a full-size bath.

Cavell Drive is a 15-minute walk from the mainline rail station and town centre of Bishops Stortford. The development has adequate parking facilities including visitors parking as well as have good bus connections to Stansted Airport.



Energy Efficiency Rating		Environmental Impact (CO <sub>2</sub> ) Rating	
	Current	Potential	
Very energy efficient - lower running costs			Very environmentally friendly - lower CO <sub>2</sub> emissions
(92-100) <b>A</b>			(92-100) <b>A</b>
(81-91) <b>B</b>			(81-91) <b>B</b>
(69-80) <b>C</b>	73	79	(69-80) <b>C</b>
(55-68) <b>D</b>			(55-68) <b>D</b>
(39-54) <b>E</b>			(39-54) <b>E</b>
(21-38) <b>F</b>			(21-38) <b>F</b>
(1-20) <b>G</b>			(1-20) <b>G</b>
Not energy efficient - higher running costs			Not environmentally friendly - higher CO <sub>2</sub> emissions
England&Wales	EU Directive 2002/91/EC		England&Wales
			EU Directive 2002/91/EC



**PM ESTATES**  
Property Sales & Lettings

## **FLOOR PLAN TO FOLLOW COMING SOON**



7 Riverside Walk, South Street, Bishop's Stortford, Herts CM23 3AG

**Tel: 01279 654646**

Email: [info@pm-estates.co.uk](mailto:info@pm-estates.co.uk)

[www.pm-estates.co.uk](http://www.pm-estates.co.uk)

PM Estates wish to advise prospective purchasers that we have not checked the services or appliances. The sales particulars have been prepared as a guide only; any floor-plan or map is for illustrative purposes only. PM Estates, for themselves and for the vendors or lessors of this property whose agents they are give notice that: the particulars have been produced in good faith; do not constitute any part of a contract; no person in the employment of PM Estates has any authority to make or give any representation of warranty in relation to this property.

P820

[www.pm-estates.co.uk](http://www.pm-estates.co.uk)