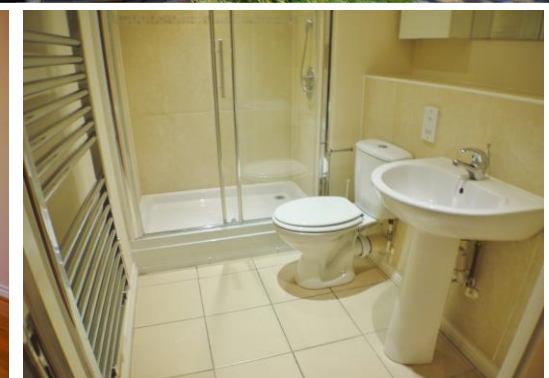




PM ESTATES

Property Sales & Lettings



Riverside Wharf

Riverside, Bishops Stortford, Hertfordshire, CM23 3GN

£1,195.00_{pcm}

www.pm-estates.co.uk

Riverside Wharf

Riverside, Bishops Stortford, Hertfordshire, CM23 3GN

Overview

- Contemporary apartment
- Exceptionally large living area
- Dual aspect
- Fully fitted kitchen
- Integrated appliances
- Private balcony with direct river views
- Two double bedrooms
- Two bathrooms
- Town Centre location
- Close proximity to main train station
- Energy rating B
- Council Tax Band C



Description

One of the rare dual-aspect apartments available in the prestigious Riverside Wharf development, this contemporary two double bedroom apartment is offered with furniture included. The apartment remains bright and airy throughout and has been recently decorated throughout enhancing its overall appearance and emphasizing its contemporary design.

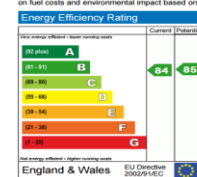
The development has become one of the most popular residential areas within Bishops Stortford as its location supports urban town centre lifestyle whilst contrasting with countryside tranquility. Riverside Wharf is within walking distance to various bars, restaurants and shops and is a two-minute walk to the mainline rail station which offers direct services to London Liverpool Street, Cambridge and Stansted Airport.

The large living area contains a white wood effect, fully fitted kitchen housing integrated appliances including a dishwasher and two large tilt and turn style windows. This vast living space is enhanced by patio style doors that lead on to a private balcony which offers direct river views.

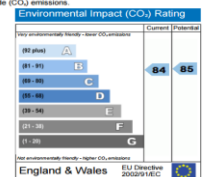
Both bedrooms are double in size with the master having the benefit of a private en-suite shower room. The property is complete with a family size bathroom and a handy storage cupboard which houses a washer dryer.



This home's performance is rated in terms of the energy use per square metre of floor area, energy efficiency based on fuel costs and environmental impact based on carbon dioxide (CO₂) emissions.



The energy efficiency rating is a measure of the overall efficiency of a home. The higher the rating the more energy efficient the home is and the lower the fuel bills are likely to be.



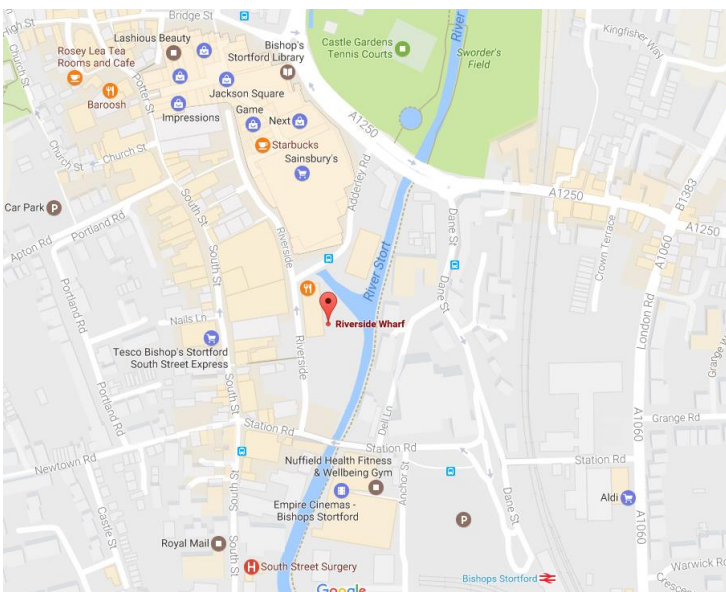
The environmental impact rating is a measure of a home's impact on the environment in terms of carbon dioxide (CO₂) emissions. The higher the rating the less impact it has on the environment.

Bishops Stortford is an historic market town with a great deal to offer. It is strategically located close to Stansted Airport, equidistant between London and Cambridge.

It has superb road and rail links; London Liverpool Street is 35 minutes away by Stansted Express and the M11 links in to the M25 at junction 27 thereby giving easy access to all parts of the country.

Locally, the main bus routes are 510, 308, and 301 operating every 20 minutes covering routes to Stansted Airport, Cambridge, Takeley, Braintree, Harlow and Saffron Walden.

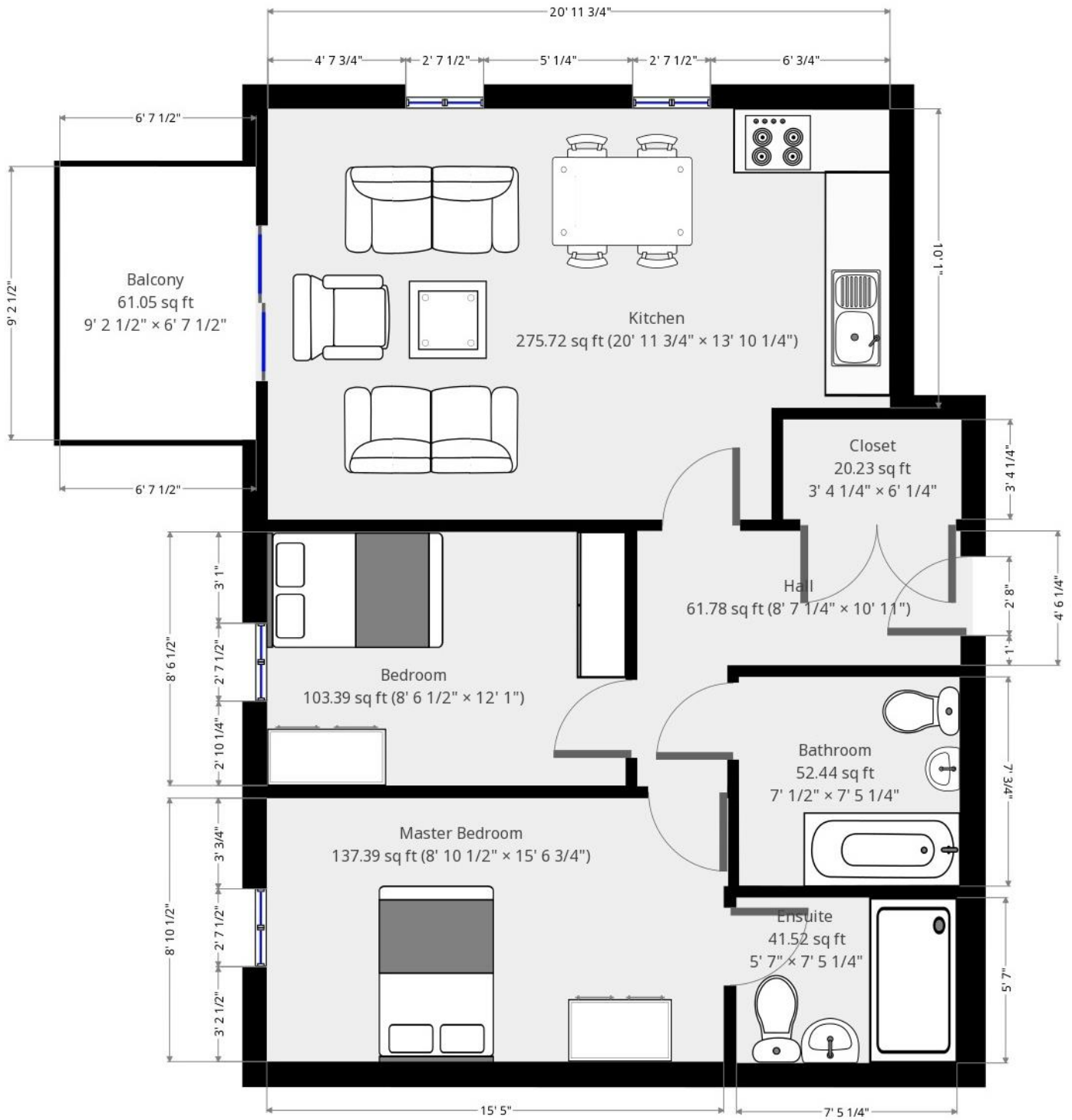
Bishops Stortford is renowned for the excellence of its schools which are many and varied comprising, Primary and Secondary schools, Christian and Catholic schools, two colleges; grant maintained Anglo European College and the fee-paying Bishops Stortford College.



Directions

From the office:

The Riverside development is located directly opposite our office on Adderley Road.



7 Riverside Walk, South Street, Bishop's Stortford, Herts CM23 3AG

Tel: 01279 654646

Email: info@pm-estates.co.uk

www.pm-estates.co.uk

PM Estates wish to advise prospective purchasers that we have not checked the services or appliances. The sales particulars have been prepared as a guide only; any floor-plan or map is for illustrative purposes only. PM Estates, for themselves and for the vendors or lessors of this property whose agents they are give notice that: the particulars have been produced in good faith; do not constitute any part of a contract; no person in the employment of PM Estates has any authority to make or give any representation of warranty in relation to this property.