



PM ESTATES

Property Sales & Lettings



Riverside Wharf

Bishops Stortford, Hertfordshire, CM23 3GN

£1,225.00_{pcm}

www.pm-estates.co.uk

Riverside Wharf

Bishops Stortford, Hertfordshire, CM23 3GN

Overview

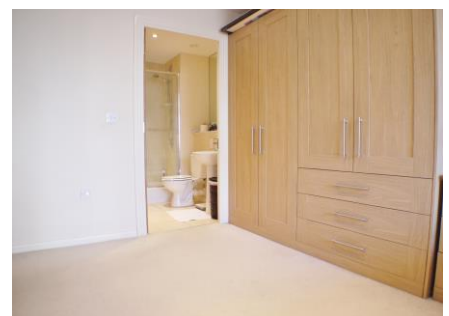
- Exceptionally large private terrace
- Contemporary apartment
- Two double bedrooms
- Two bathrooms
- Open plan living area
- Fully fitted kitchen
- Integrated appliances
- Offered furnished
- Town centre location
- Walking distance to station
- Energy rating B
- Council Tax Band C



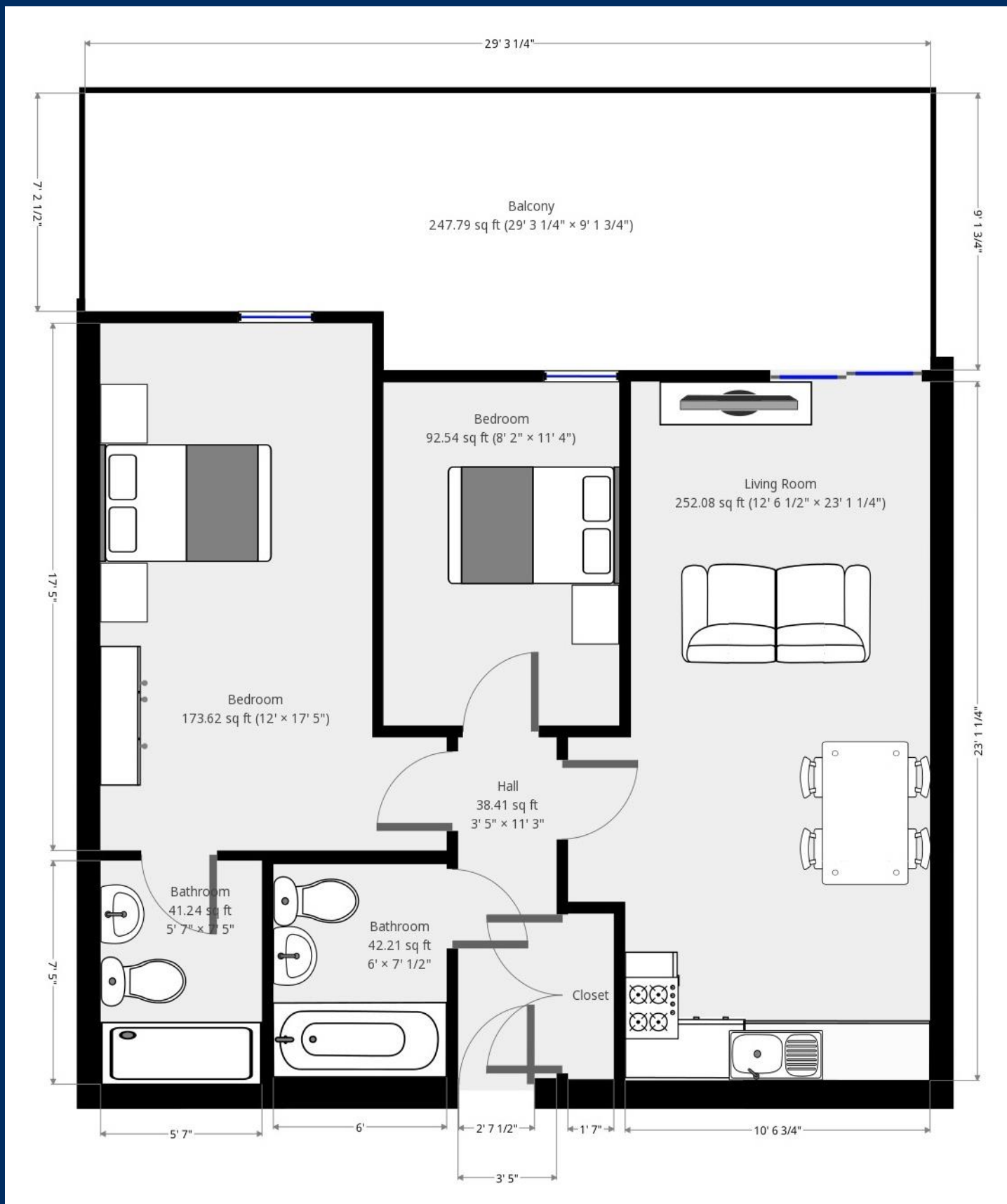
Description

With private access to an exceptionally large terraced area and containing two double bedrooms, this contemporary apartment is ideal for clients looking to take advantage of town centre living. Riverside Wharf is renowned in the area as one of the best private residential developments and is a three-minute walk to the mainline rail station which offers direct services to London Liverpool Street, Cambridge and Stansted Airport.

The apartment comprises a large an open plan living area featuring a fully fitted kitchen containing integrated appliances including a full-size AEG dishwasher. This living space is finished with wood style flooring throughout and has a patio style for that leads to the private terrace which has direct river views. The property is complete with two bathrooms and a has large internal storage cupboard which has become rare amongst modern day apartments.



Energy Efficiency Rating		Environmental Impact (CO ₂) Rating			
	Current	Potential		Current	Potential
Very energy efficient - lower running costs			Very environmentally friendly - lower CO ₂ emissions		
(92-100) A			(92-100) A		
(81-91) B	85	86	(81-91) B	85	86
(69-80) C			(69-80) C		
(55-68) D			(55-68) D		
(39-54) E			(39-54) E		
(21-38) F			(21-38) F		
(1-20) G			(1-20) G		
Not energy efficient - higher running costs			Not environmentally friendly - higher CO ₂ emissions		
England&Wales	EU Directive 2002/91/EC		England&Wales	EU Directive 2002/91/EC	



7 Riverside Walk, South Street, Bishop's Stortford, Herts CM23 3AG

Tel: 01279 654646

Email: info@pm-estates.co.uk

www.pm-estates.co.uk

PM Estates wish to advise prospective purchasers that we have not checked the services or appliances. The sales particulars have been prepared as a guide only; any floor-plan or map is for illustrative purposes only. PM Estates, for themselves and for the vendors or lessors of this property whose agents they are give notice that: the particulars have been produced in good faith; do not constitute any part of a contract; no person in the employment of PM Estates has any authority to make or give any representation of warranty in relation to this property.

P820

www.pm-estates.co.uk