



# PM ESTATES

Property Sales & Lettings



## Riverside Wharf

Bishops Stortford, Hertfordshire, CM23 3GP

£1,175.00<sub>pcm</sub>

# Riverside Wharf

Bishops Stortford, Hertfordshire, CM23 3GP

## Overview

- Well-proportioned L-shaped apartment
- Two double bedrooms
- Two bathrooms
- Open plan living area
- Large feature picture style window
- Fully fitted wood effect kitchen
- Integrated appliances including dishwasher
- Stunning town centre views
- Offered furnished
- Town centre location
- Energy rating B
- Council Tax band C

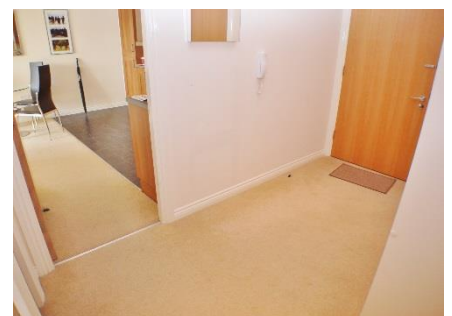
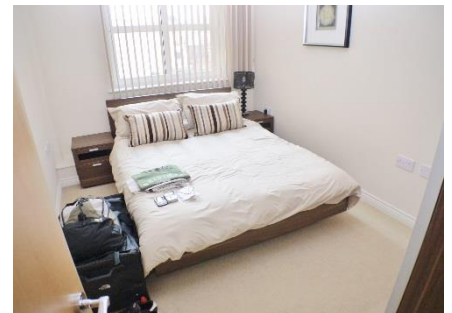


## Description

Located in the prestigious Riverside Wharf development this large and L-shaped two double bedroom apartment is located on the third floor and is offered to the rental market furnished.

The property comprises two bathrooms to accompany the bedrooms, one of which is a private en suite for the master bedroom and a large and open plan living area which benefits from a double picture style window offering stunning town centre views. This large living space also contains a fully fitted and wood effect kitchen which houses integrated appliances including a full-size AEG dishwasher.

Riverside Wharf is a two-minute walk from the mainline rail station which offers direct services to London Liverpool Street, Cambridge and Stansted Airport. The development is surrounded by various amenities including bars, restaurants, shops and two gyms.



Energy Efficiency Rating		Current	Potential	Environmental Impact (CO <sub>2</sub> ) Rating		Current	Potential
Very energy efficient - lower running costs				Very environmentally friendly - lower CO <sub>2</sub> emissions			
(92-100) A				(92-100) A			
(81-91) B		85	86	(81-91) B	85	86	
(69-80) C				(69-80) C			
(55-68) D				(55-68) D			
(39-54) E				(39-54) E			
(21-38) F				(21-38) F			
(1-20) G				(1-20) G			
Not energy efficient - higher running costs				Not environmentally friendly - higher CO <sub>2</sub> emissions			
England&Wales		EU Directive 2002/91/EC		England&Wales		EU Directive 2002/91/EC	



7 Riverside Walk, South Street, Bishop's Stortford, Herts CM23 3AG

Tel: 01279 654646

Email: [info@pm-estates.co.uk](mailto:info@pm-estates.co.uk)

[www.pm-estates.co.uk](http://www.pm-estates.co.uk)

PM Estates wish to advise prospective purchasers that we have not checked the services or appliances. The sales particulars have been prepared as a guide only; any floor-plan or map is for illustrative purposes only. PM Estates, for themselves and for the vendors or lessors of this property whose agents they are give notice that: the particulars have been produced in good faith; do not constitute any part of a contract; no person in the employment of PM Estates has any authority to make or give any representation of warranty in relation to this property.

P820

[www.pm-estates.co.uk](http://www.pm-estates.co.uk)