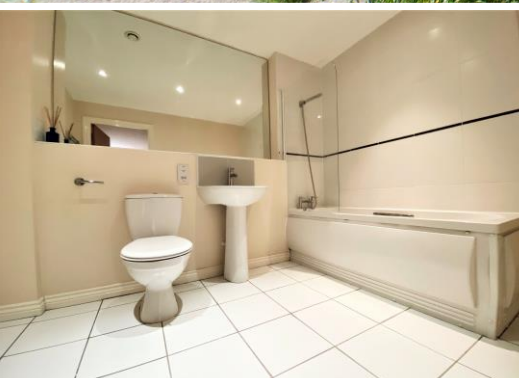




# PM ESTATES

Property Sales & Lettings



## Riverside Wharf

Bishops Stortford, Hertfordshire, CM23 3GP

£1,250.00<sub>PCM</sub>

[www.pm-estates.co.uk](http://www.pm-estates.co.uk)



# Riverside Wharf

Bishops Stortford, Hertfordshire, CM23 3GP

## Overview

- Third Floor Apartment
- Large Open-Plan Living Area
- Two Double Bedrooms
- Additional Office Space
- Family Sized Bathroom and En-Suite
- Fitted Two-Tone Gloss Kitchen
- Integrated Appliances
- Walking Distance to Mainline Rail Station
- Allocated Parking
- Offered Furnished
- Energy Rating: B
- Council Tax Band: C



## Description

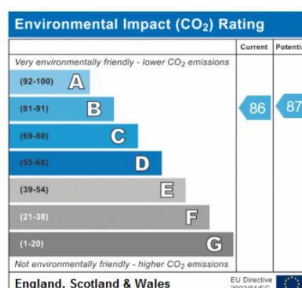
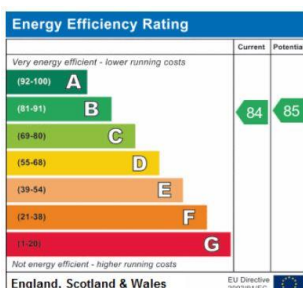
Situated in the town centre of Bishops Stortford stands this modern two double bedroom, furnished third floor apartment now available for rental within the sought-after Riverside Wharf Development

The property comprises of an open plan living area which flows freely onto a fitted modern two-tone gloss kitchen with integrated appliances.

Also included within this apartment are two sizable double bedrooms with the master bedroom inclusive of an en-suite bathroom, with the added benefit of an additional office space room. Furthermore, the property is also consistent of a family sized bathroom with tiled flooring throughout.

Riverside Wharf remains a popular residential development due to its town centre positioning as well as its quality of finish. The development is just a stones' throw away from various local amenities such as the locally renowned and highly fashionable EAT17 restaurant and food market filled with fresh produce and a vibrant atmosphere as well as the Port Jackson Wetherspoons just a short 2-minute walk away.

This residential location is a convenient 5-minute walk (0.4miles) away from the mainline rail station offering direct services into London Liverpool Street, Stansted Airport and Cambridge City Centre.



# Floor Plan



7 Riverside Walk, South Street, Bishop's Stortford, Herts CM23 3AG

Tel: 01279 654646

Email: [info@pm-estates.co.uk](mailto:info@pm-estates.co.uk)

[www.pm-estates.co.uk](http://www.pm-estates.co.uk)

PM Estates wish to advise prospective purchasers that we have not checked the services or appliances. The sales particulars have been prepared as a guide only; any floor-plan or map is for illustrative purposes only. PM Estates, for themselves and for the vendors or lessors of this property whose agents they are give notice that: the particulars have been produced in good faith; do not constitute any part of a contract; no person in the employment of PM Estates has any authority to make or give any representation of warranty in relation to this property.