



# PM ESTATES

Property Sales & Lettings



## Riverside Wharf

Bishops Stortford, Hertfordshire, CM23 3GN

£1,250<sub>PCM</sub>

[www.pm-estates.co.uk](http://www.pm-estates.co.uk)

# Riverside Wharf

Bishops Stortford, Hertfordshire, CM23 3GN

## Overview

- Second Floor Apartment
- One Double Bedroom
- Large Open-Plan Living Area
- Feature Window Overlooking Town
- Town Centre Views
- Fully Fitted Modern Kitchen
- Integrated Appliances
- Recently Tiled Family Bathroom
- Offered Part-Furnished
- Town Centre Location
- Walking Distance to Mainline Rail Station
- Energy Rating B
- Council Tax Band B



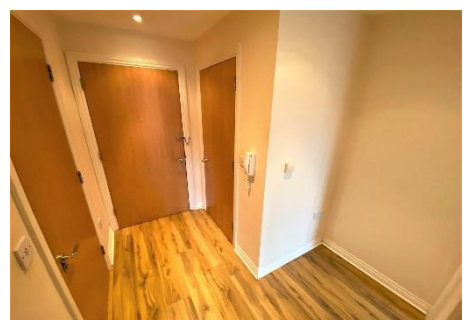
## Description

This spacious and well-proportioned one double bedroom apartment is offered part furnished and located within the exceptionally popular Riverside Wharf development which is situated in the Town Centre of Bishops Stortford.

This second-floor apartment benefits from modern fully fitted kitchen inclusive of a dishwasher which leads on to an open-plan living area creating a spacious, light and airy ambience throughout. The property is also home to a fully tiled family sized bathroom with both bath and showering facilities.

The development is renowned for its high-class finish and proximity to all local amenities such as Sainsbury's, Marks & Spencer, the Snap Fitness 24/7 Gym and the locally renowned South Street Pantry which has quickly become a staple of Bishops Stortford Town Centre with its quirky feel and varied cuisine.

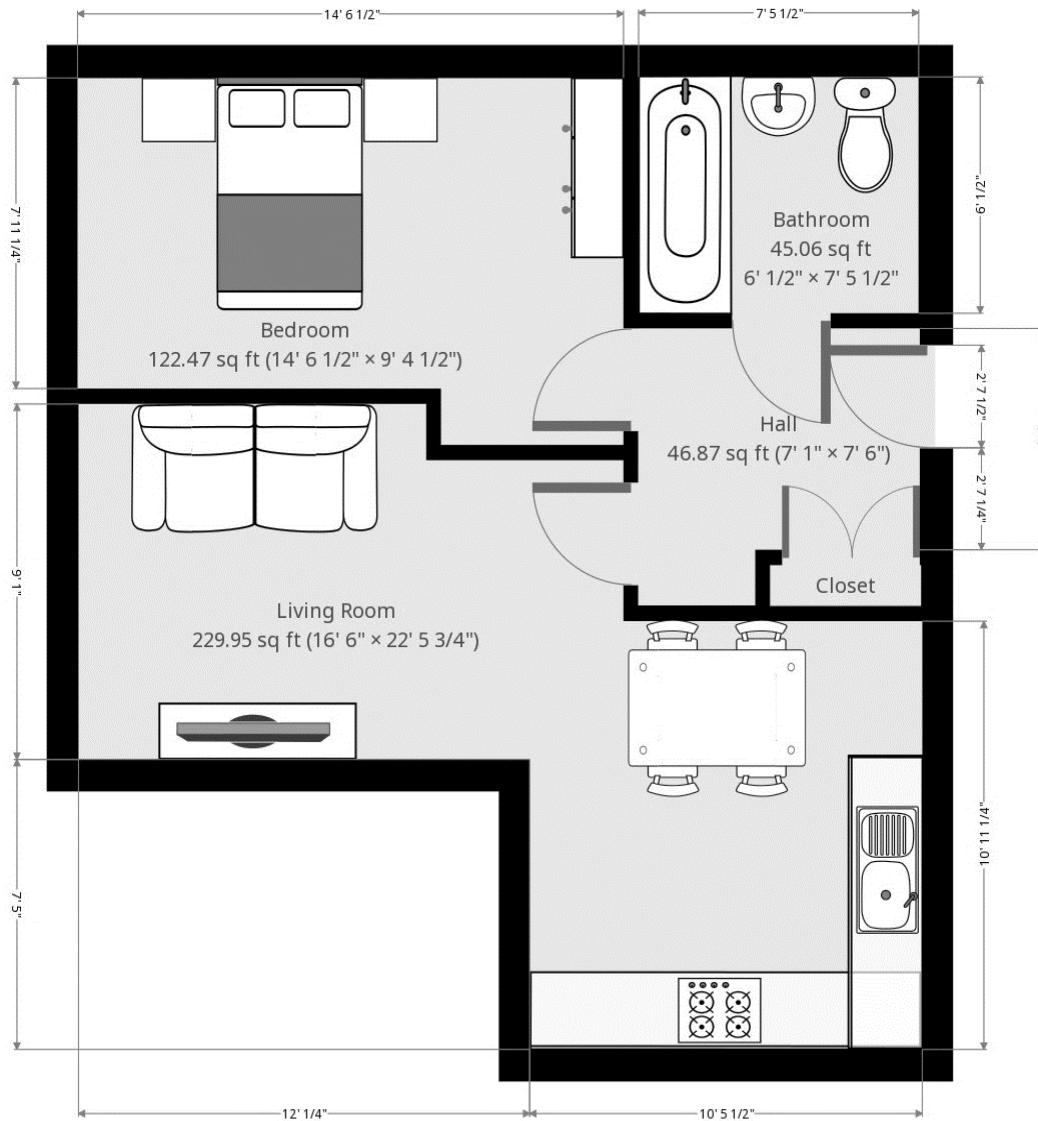
The Mainline Rail Station is a short two-minute walk away from the development, which offers direct services to London Liverpool Street, Cambridge and Stansted Airport.



Score	Energy rating	Current	Potential
92+	A		
81-91	B	82 B	83 B
69-80	C		
55-68	D		
39-54	E		
21-38	F		
1-20	G		



# Floor Plan



7 Riverside Walk, South Street, Bishop's Stortford, Herts CM23 3AG

Tel: 01279 654646

Email: [info@pm-estates.co.uk](mailto:info@pm-estates.co.uk)

[www.pm-estates.co.uk](http://www.pm-estates.co.uk)

PM Estates wish to advise prospective purchasers that we have not checked the services or appliances. The sales particulars have been prepared as a guide only; any floor-plan or map is for illustrative purposes only. PM Estates, for themselves and for the vendors or lessors of this property whose agents they are give notice that: the particulars have been produced in good faith; do not constitute any part of a contract; no person in the employment of PM Estates has any authority to make or give any representation of warranty in relation to this property.

P820

[www.pm-estates.co.uk](http://www.pm-estates.co.uk)