



PM ESTATES

Property Sales & Lettings



Red Lion Court

Bishops Stortford, Hertfordshire, CM23 3YL

£995.00_{PCM}

www.pm-estates.co.uk

Red Lion Court

Bishops Stortford, Hertfordshire, CM23 3YL

Overview

- Modern Apartment
- Two Double Bedrooms
- Family Sized Tiled Bathroom
- Open-Plan Living Area
- Fully Fitted Kitchen
- Allocated Parking
- Communal Garden Areas
- Offered Un-Furnished
- Energy Rating C
- Council Tax Band C



Description

Rarely available and immaculately presented two-bedroom apartment within the ever-popular Red Lion Court Development, within the town centre of Bishops Stortford.

The property was recently renovated to an exceptionally high standard and now features a fully fitted kitchen complete gloss styled wall and base units and with integrated appliances, including a washing machine. This modern designed kitchen enhances the dual aspect and open plan living area.

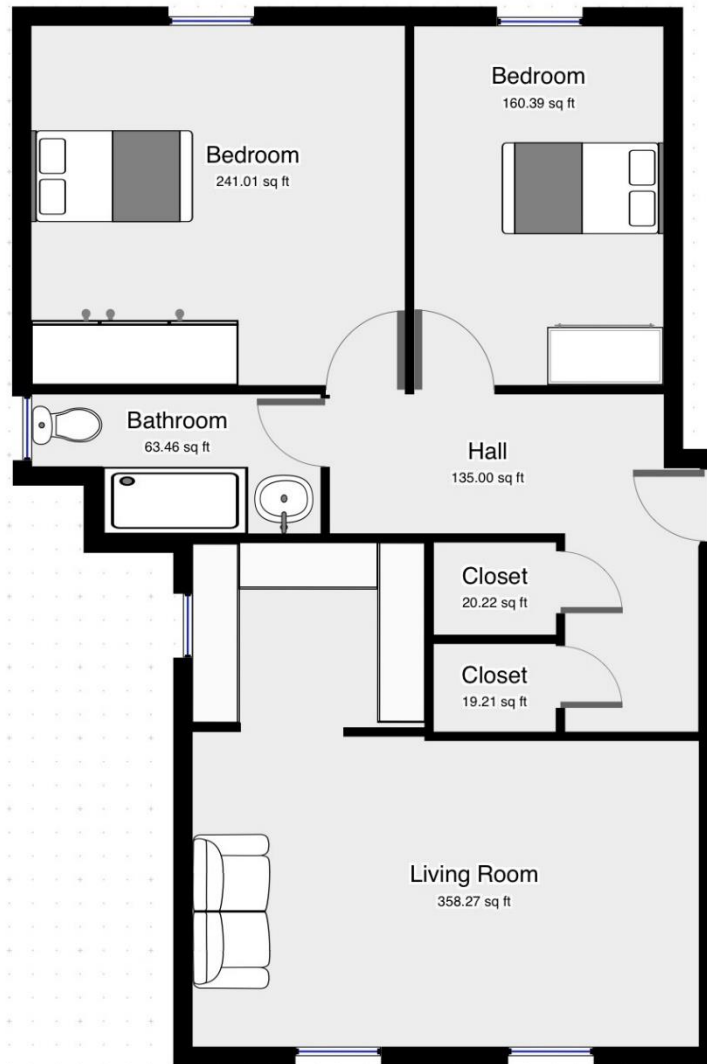
The property comprises of two good sized bedrooms and complete with a recently upgraded family sized bathroom complete with modern fixtures and fittings.

This popular development is a two-minute walk to the Mainline Rail Station of Bishops Stortford, which direct links to Cambridge city centre, Stansted Airport and London Liverpool Street, making this an ideal property for commuters and airport staff. Contact us today on 01279 654646 to avoid disappointment!



Energy Efficiency Rating			Environmental Impact (CO ₂) Rating		
	Current	Potential		Current	Potential
Very energy efficient - lower running costs			Very environmentally friendly - lower CO ₂ emissions		
(92-100) A			(92-100) A		
(81-91) B			(81-91) B	81	83
(69-80) C			(69-80) C		
(55-68) D			(55-68) D		
(39-54) E			(39-54) E		
(21-38) F			(21-38) F		
(1-20) G			(1-20) G		
Not energy efficient - higher running costs			Not environmentally friendly - higher CO ₂ emissions		
		79			
		81			
England	EU Directive 2002/91/EC		England	EU Directive 2002/91/EC	

Floor Plan



7 Riverside Walk, South Street, Bishop's Stortford, Herts CM23 3AG

Tel: 01279 654646

Email: info@pm-estates.co.uk

www.pm-estates.co.uk

PM Estates wish to advise prospective purchasers that we have not checked the services or appliances. The sales particulars have been prepared as a guide only; any floor-plan or map is for illustrative purposes only. PM Estates, for themselves and for the vendors or lessors of this property whose agents they are give notice that: the particulars have been produced in good faith; do not constitute any part of a contract; no person in the employment of PM Estates has any authority to make or give any representation of warranty in relation to this property.

P820

www.pm-estates.co.uk