



PM ESTATES

Property Sales & Lettings



The Moorings

Bishops Stortford, Hertfordshire, CM23 3DQ

£1,250PCM

www.pm-estates.co.uk

The Moorings

Bishops Stortford, Hertfordshire, CM23 3DQ

Overview

- Terraced House
- Two Double Bedrooms
- Family Size Bathroom and WC
- Fully Fitted Kitchen
- Open Plan Lounge Area
- Private Rear Garden
- Allocated Parking
- Town Centre Location
- Short Walk to Train station
- Unfurnished
- Energy Rating C
- Council Tax Band D



Description

PM Estates are pleased to introduce this mid-terraced house situated in the Moorings development within Bishops Stortford.

This family home is complete with two double sized bedrooms, a family sized tiled bathroom and a modern styled fitted kitchen complete with appliances including a washing machine.

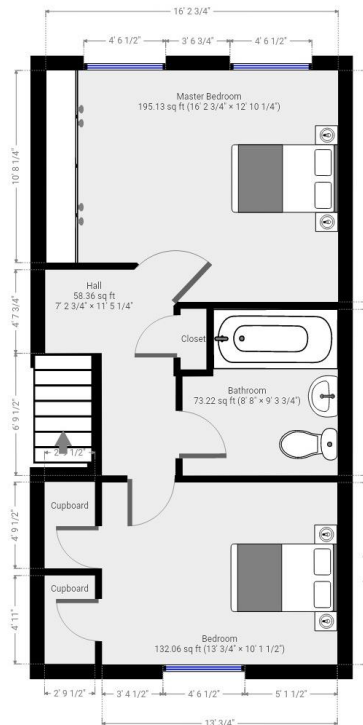
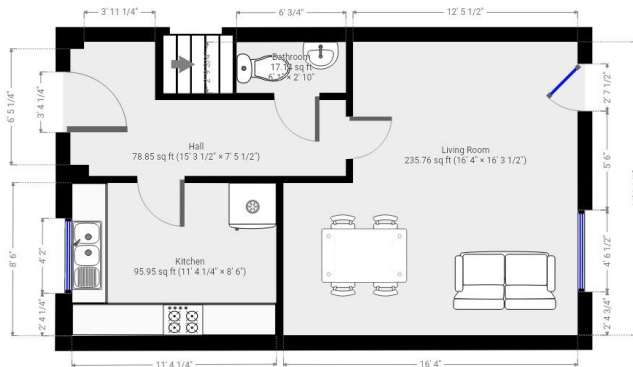
The property also features a large living area which has been finished with wooden style flooring, leading onto a private rear garden.

The Moorings Development is close proximity to the mainline rail station which offers direct services to London Liverpool Street, Cambridge and Stansted Airport.



Energy Efficiency Rating		Environmental Impact (CO ₂) Rating	
Current	Potential	Current	Potential
<small>Very energy efficient - lower running costs</small> <small>(92-100)</small> A <small>(81-91)</small> B <small>(69-80)</small> C <small>(55-68)</small> D <small>(39-54)</small> E <small>(21-38)</small> F <small>(1-20)</small> G <small>Not energy efficient - higher running costs</small>		<small>Very environmentally friendly - lower CO₂ emissions</small> <small>(92-100)</small> A <small>(81-91)</small> B <small>(69-80)</small> C <small>(55-68)</small> D <small>(39-54)</small> E <small>(21-38)</small> F <small>(1-20)</small> G <small>Not environmentally friendly - higher CO₂ emissions</small>	
<small>England</small> <small>EU Directive 2002/91/EC</small>		<small>England</small> <small>EU Directive 2002/91/EC</small>	

Floor Plan



7 Riverside Walk, South Street, Bishop's Stortford, Herts CM23 3AG

Tel: 01279 654646

Email: info@pm-estates.co.uk

www.pm-estates.co.uk

PM Estates wish to advise prospective purchasers that we have not checked the services or appliances. The sales particulars have been prepared as a guide only; any floor-plan or map is for illustrative purposes only. PM Estates, for themselves and for the vendors or lessors of this property whose agents they are give notice that: the particulars have been produced in good faith; do not constitute any part of a contract; no person in the employment of PM Estates has any authority to make or give any representation of warranty in relation to this property. p820