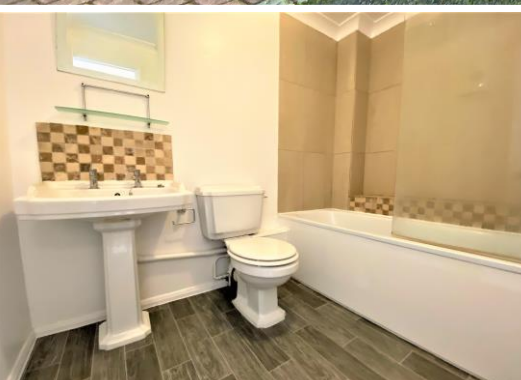




PM ESTATES

Property Sales & Lettings



Braziers Quay

Bishops Stortford, Hertfordshire, CM23 3YN

Guide Price **£210,000**

Braziers Quay

Bishops Stortford, Hertfordshire, CM23 3YN

Overview

- First Floor Apartment
- Modern Interior Design
- One Double Bedroom
- Fully Fitted Kitchen
- Integrated Appliances
- Family Sized Tiled Bathroom
- Town Centre Location
- Close Proximity to Rail Station
- Allocated Parking Available
- Energy Rating C
- Council Tax Band B



Description

PM Estates are pleased to introduce this spacious, modern first floor apartment situated within the popular Braziers Quay development just off the town centre of Bishops Stortford.

This popular residential development has truly stood the test of time due to its quality of finish as well as its close proximity to many of the towns amenities inclusive of the mainline rail station offering direct services into London Liverpool Street, Stansted Airport and Cambridge City Centre.

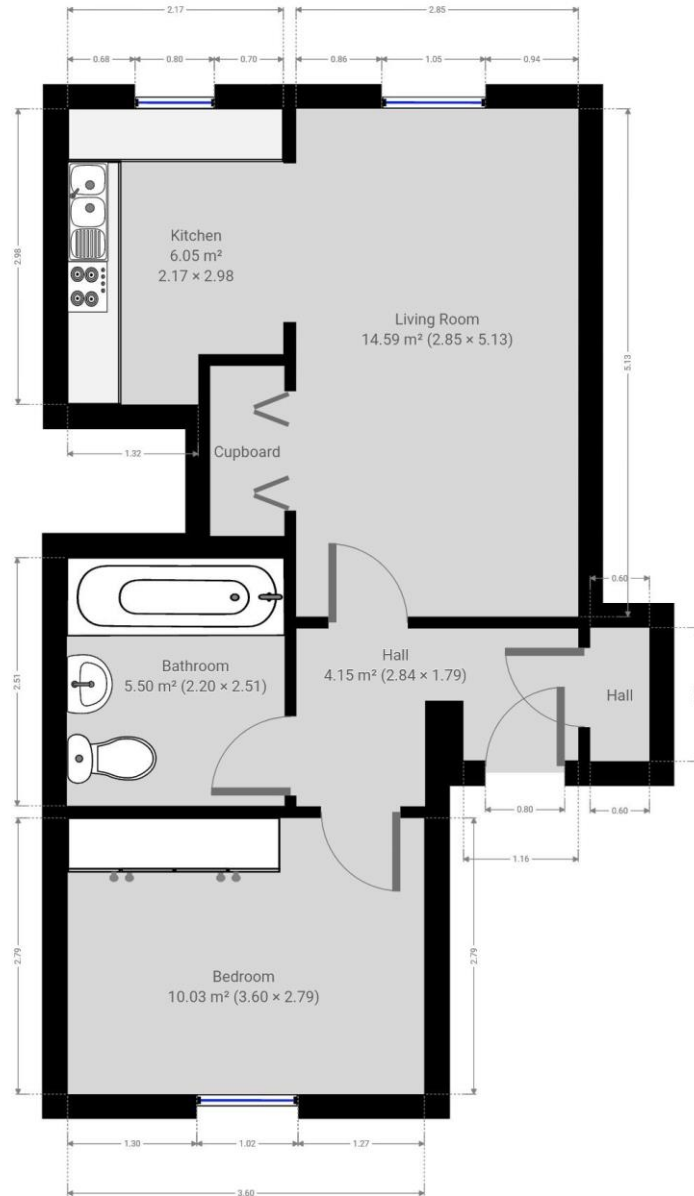
The property comprises of a generously sized living area with ample space for both a lounge and dining area with feature picture window overlooking the communal gardens below. This light and airy living space is complete with newly fitted grey coloured carpets which work in tandem with the recently decorated white walls throughout which only serve to further amplify the light and airy feel present throughout the property.

Following on from the living area you will be greeted by a fitted kitchen area with appliances inclusive of a fridge / freezer, washing machine as well as a Hotpoint oven and hob. The property is also home to a family sized tiled bathroom complete with both bath and shower facilities. The bedroom is double in size and is finished with a purposed built, built-in wardrobe complete with newly fitted carpet throughout. The property also benefits from an allocated parking bay.

Braziers Quay proves an attractive investment opportunity with potential yields in excess of 5%. The service charge is £84pcm with no ground rent payable. In addition, this particular property benefits from an exceptionally long lease whereby there are 158 years remaining at present. Call us today to book your viewing appointment and avoid disappointment – 01279 654646.



Floor Plan



7 Riverside Walk, South Street, Bishop's Stortford, Herts CM23 3AG

Tel: 01279 654646

Email: info@pm-estates.co.uk

www.pm-estates.co.uk

PM Estates wish to advise prospective purchasers that we have not checked the services or appliances. The sales particulars have been prepared as a guide only; any floor-plan or map is for illustrative purposes only. PM Estates, for themselves and for the vendors or lessors of this property whose agents they are give notice that: the particulars have been produced in good faith; do not constitute any part of a contract; no person in the employment of PM Estates has any authority to make or give any representation of warranty in relation to this property.

P820

www.pm-estates.co.uk